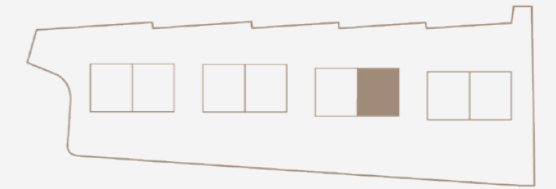


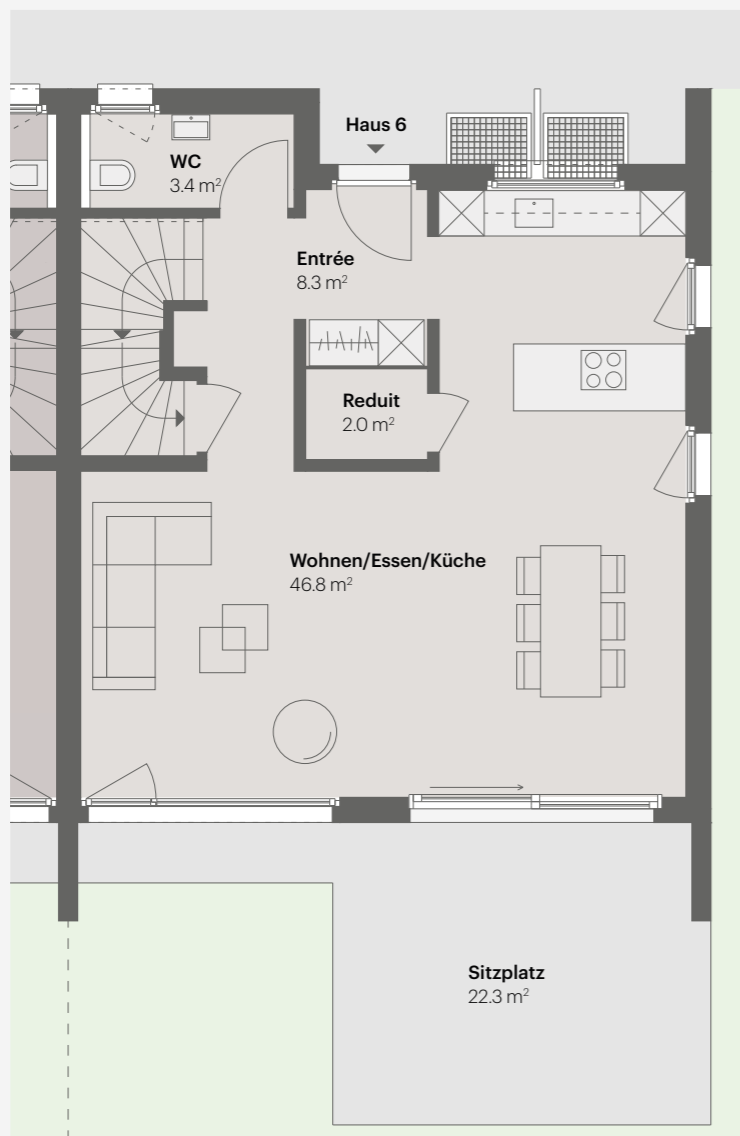
HAUS 6

5.5 Zimmer | Wohnfläche 163.5 m²
Untergeschoss 52.3 m² | Parzellenfläche 359 m²

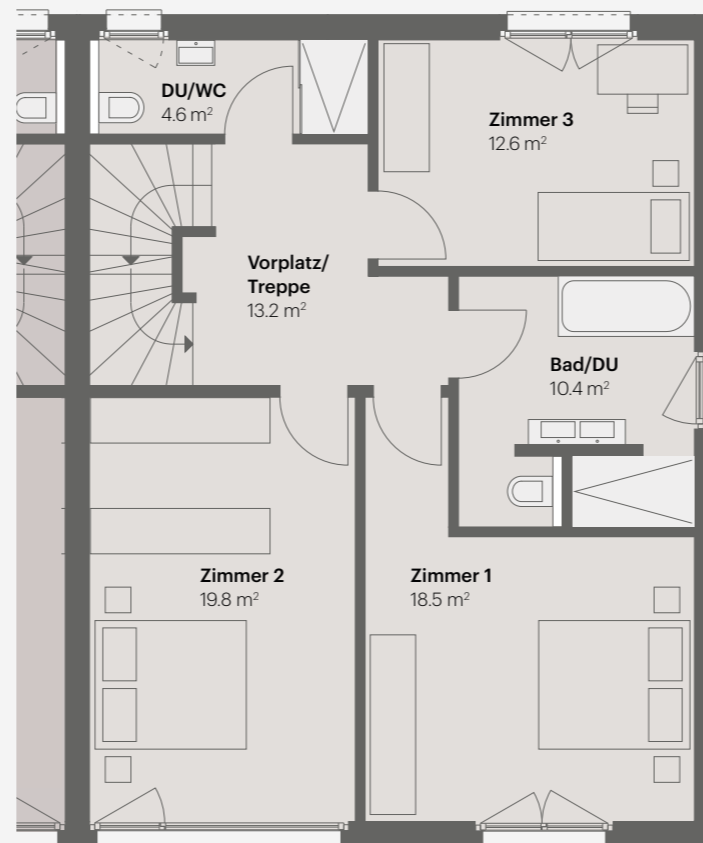
Grundriss-Option für 6.5 Zimmer Variante siehe Seite 42



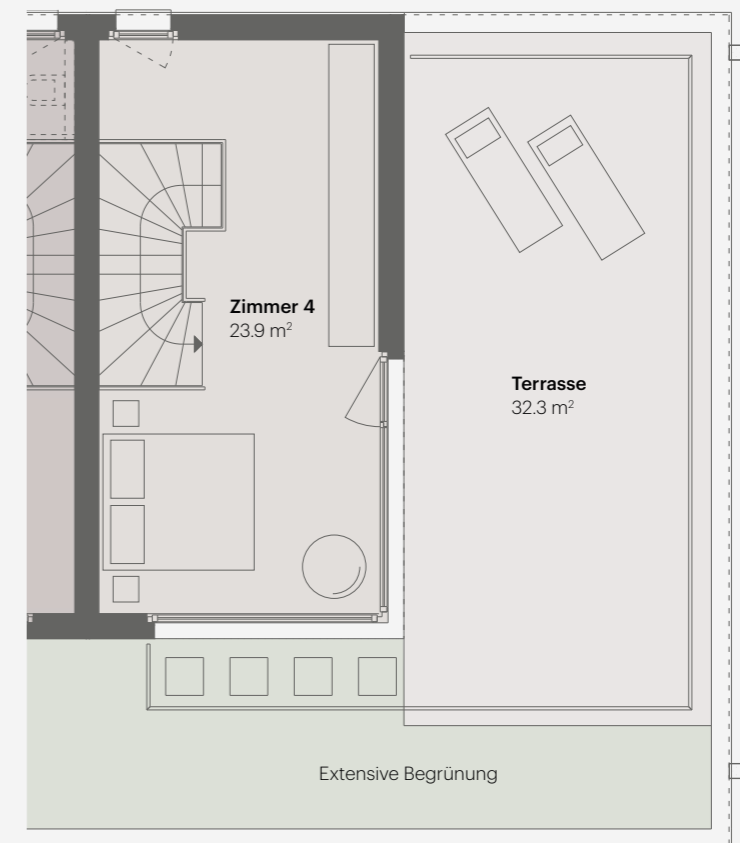
ERDGESCHOSS



OBERGESCHOSS



ATTIKAGESCHOSS



Maßstab 1:100

