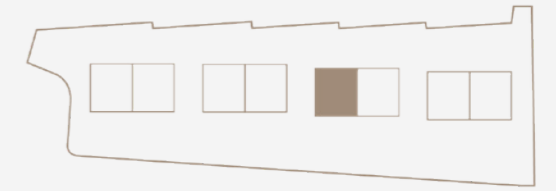


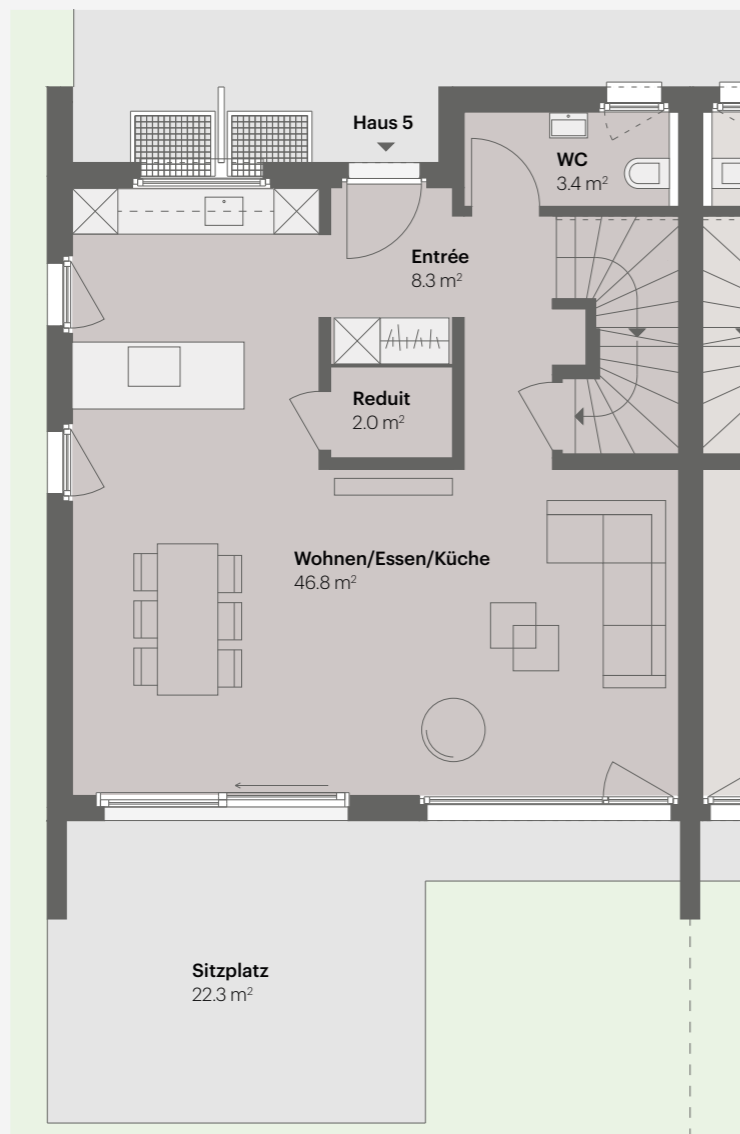
HAUS 5

5.5 Zimmer | Wohnfläche 163.5 m²
Untergeschoss 64.5 m² | Parzellenfläche 303 m²

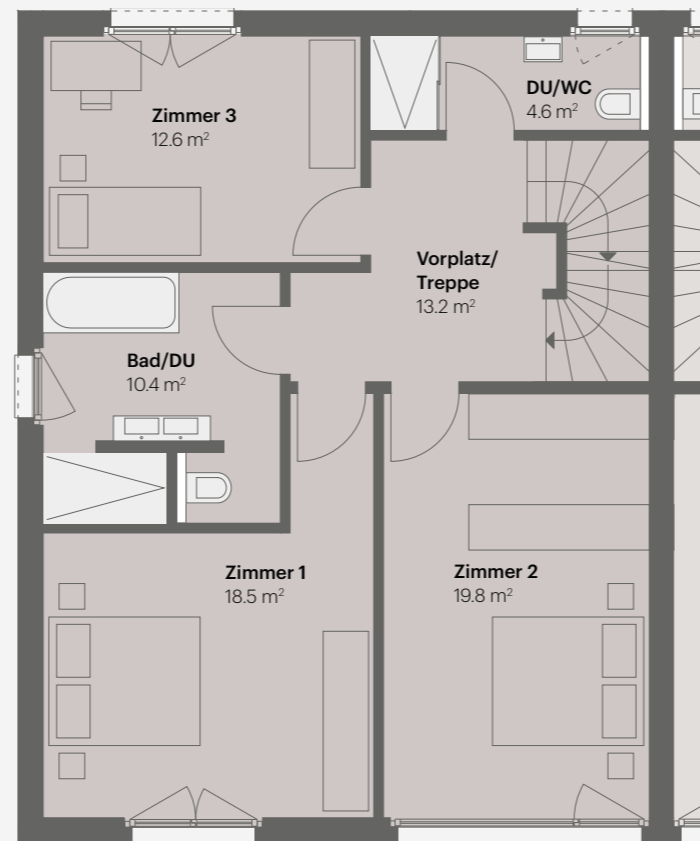
Grundriss-Option für 6.5 Zimmer Variante siehe Seite 42



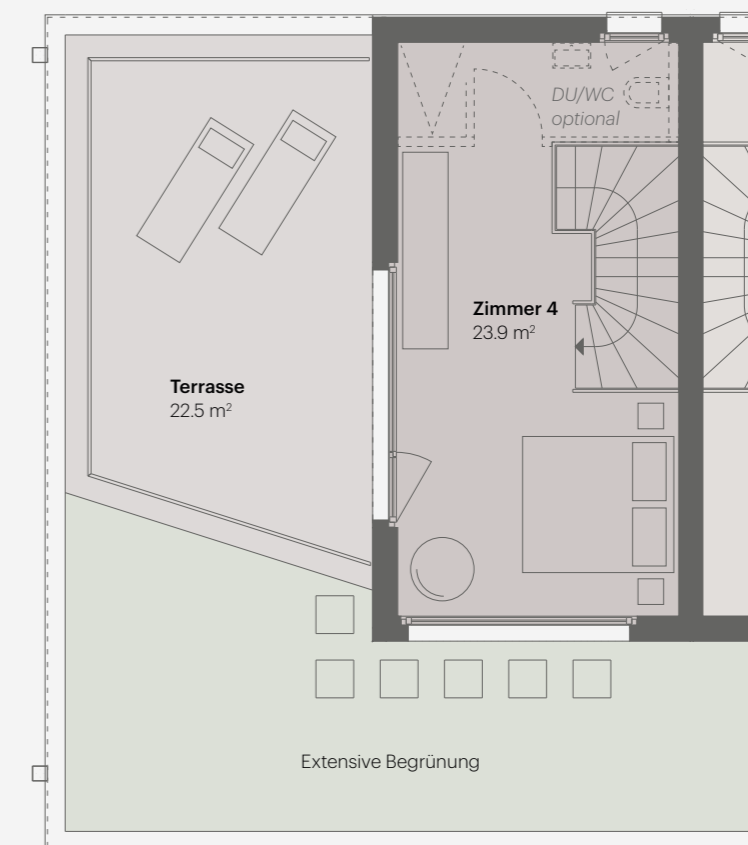
ERDGESCHOSS



OBERGESSCHOSS



ATTIKAGESCHOSS



Massstab 1:100 0 1 m