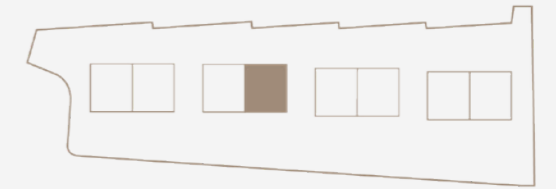


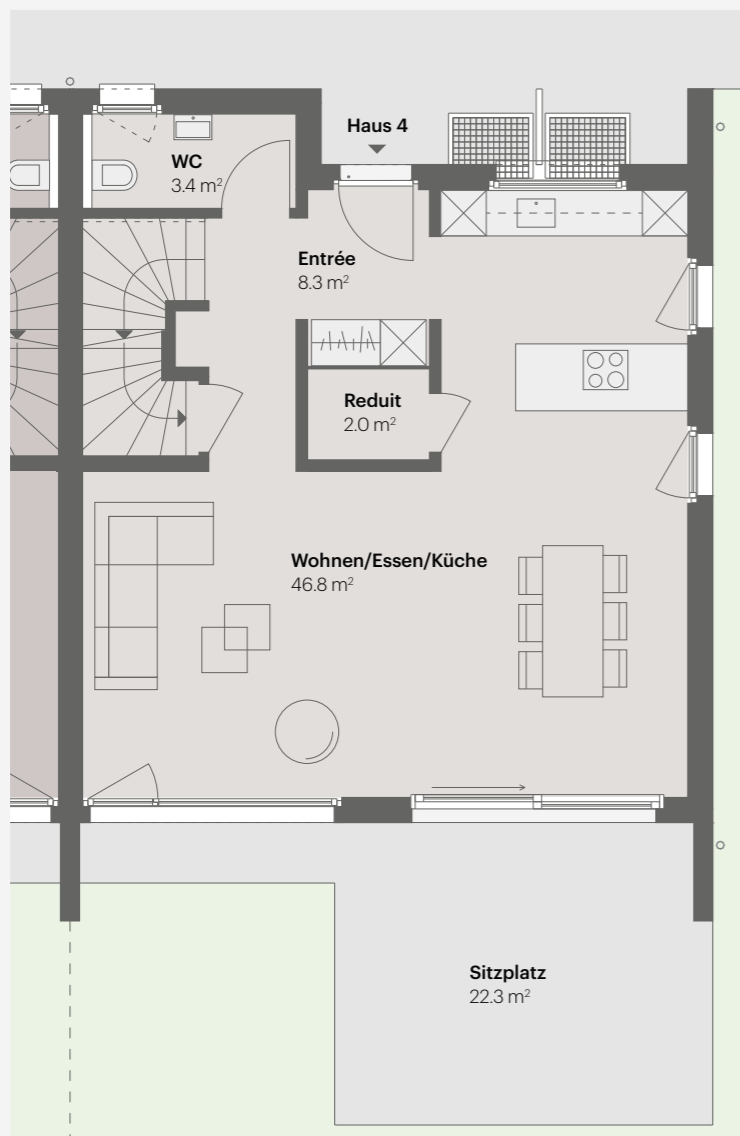
# HAUS 4

5.5 Zimmer | Wohnfläche 163.5 m<sup>2</sup>  
Untergeschoss 46.5 m<sup>2</sup> | Parzellenfläche 347 m<sup>2</sup>

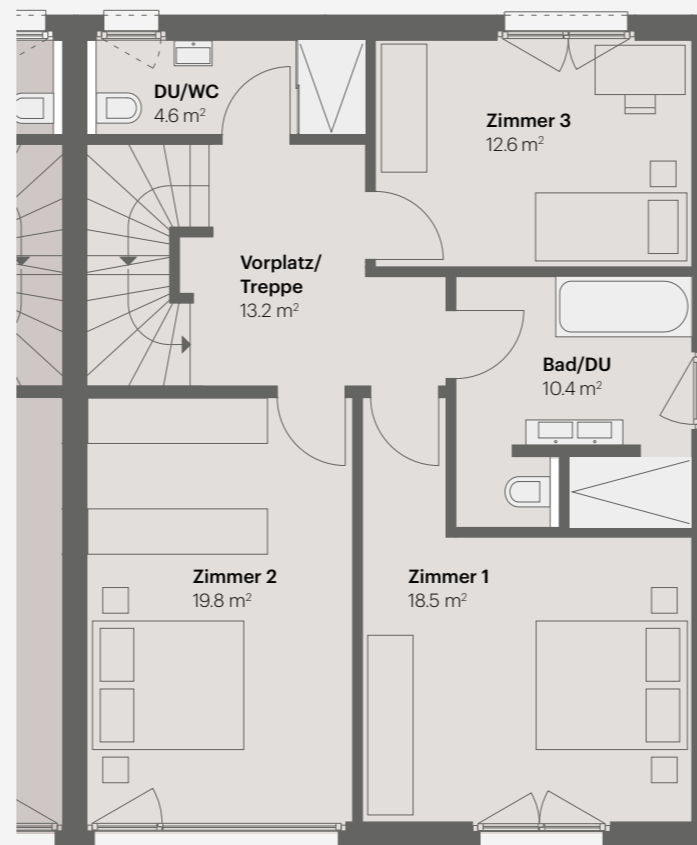
Grundriss-Option für 6.5 Zimmer Variante siehe Seite 42



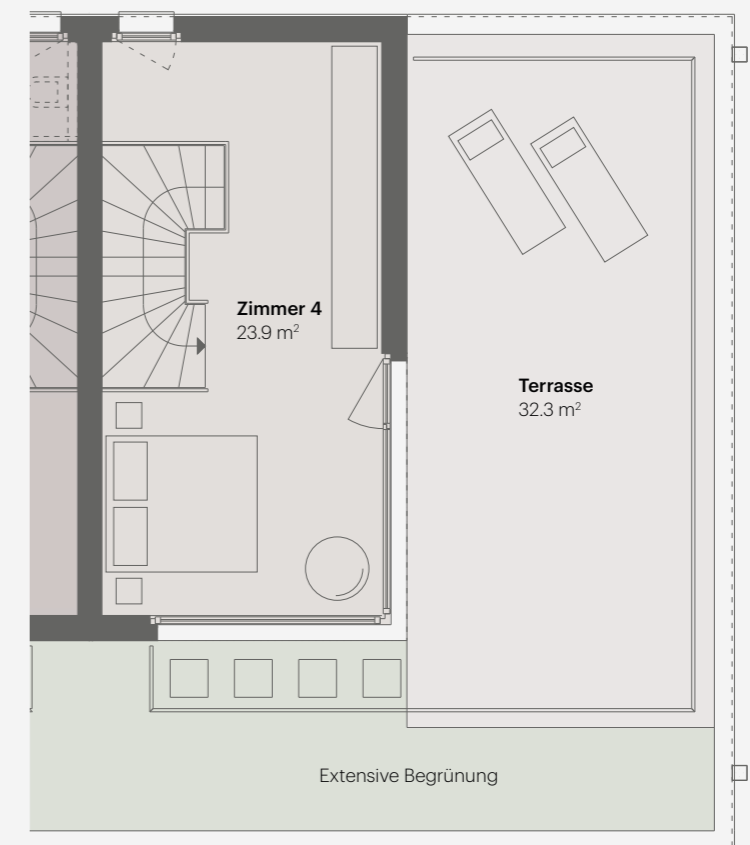
## ERDGESCHOSS



## OBERGEHOSS



## ATTIKAGESCHOSS



Maßstab 1:100

