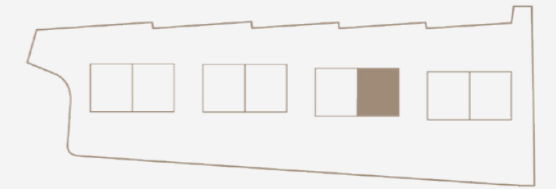
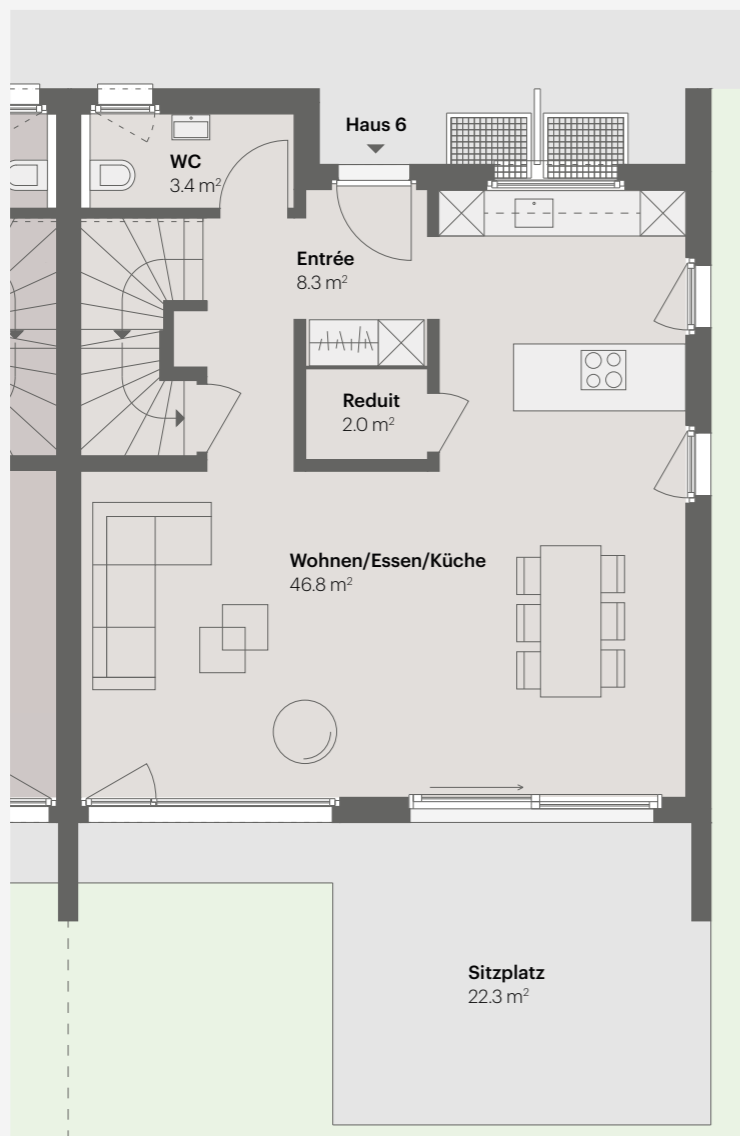


HAUS 6

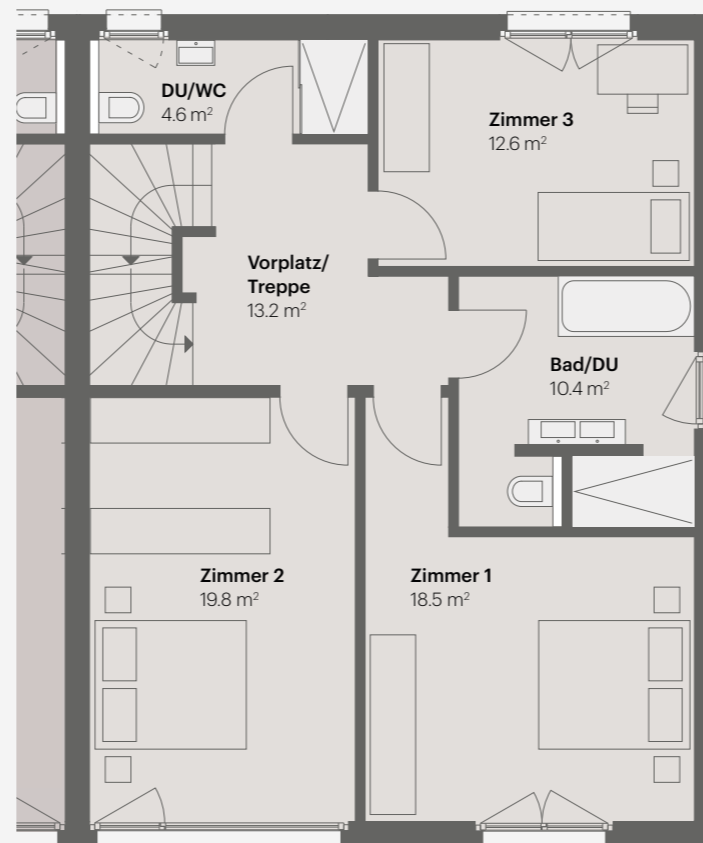
5.5 Zimmer | Wohnfläche 163.5 m²
Untergeschoss 52.3 m² | Parzellenfläche 359 m²



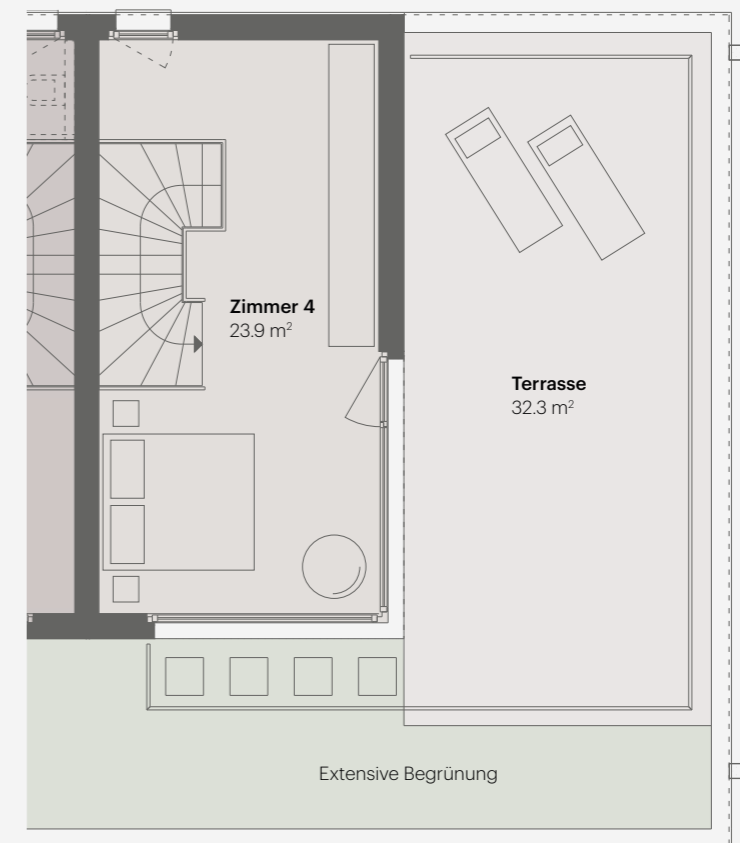
ERDGESCHOSS



OBERGESCHOSS



ATTIKAGESCHOSS



Maßstab 1:100



TIEFGARAGE HÄUSER 5-8

