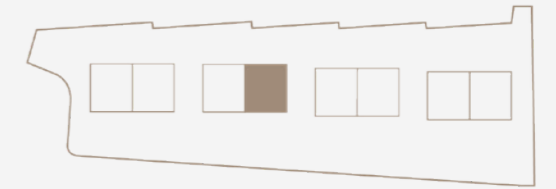
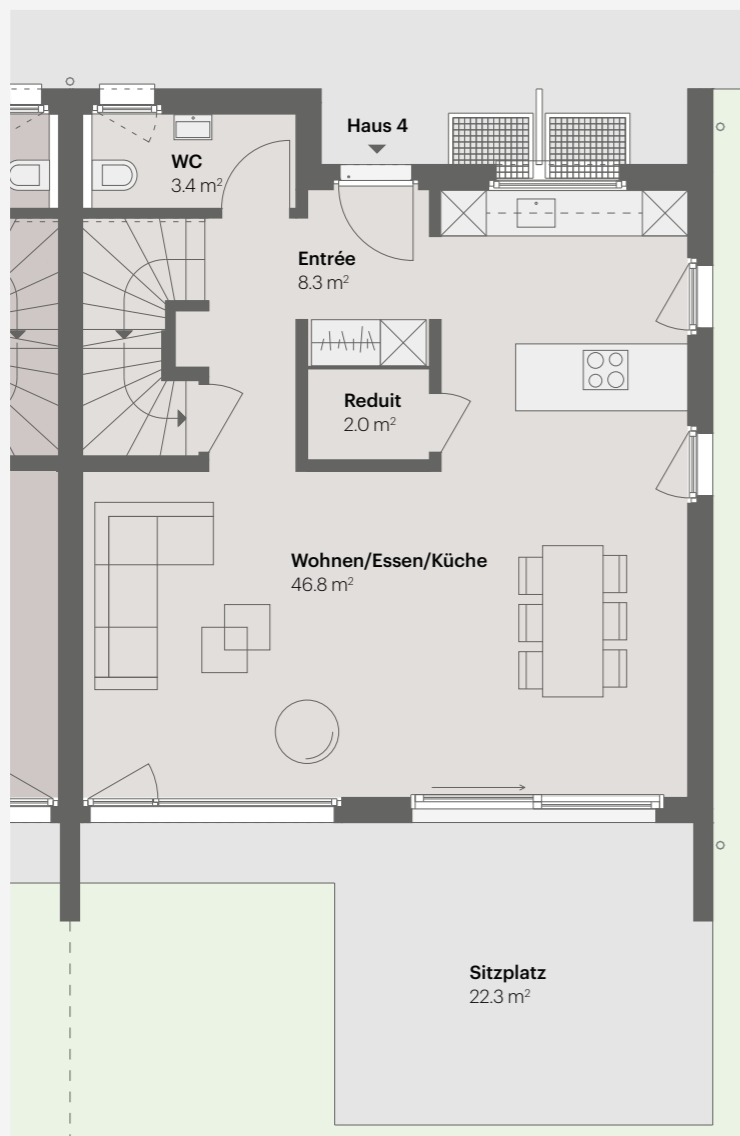


HAUS 4

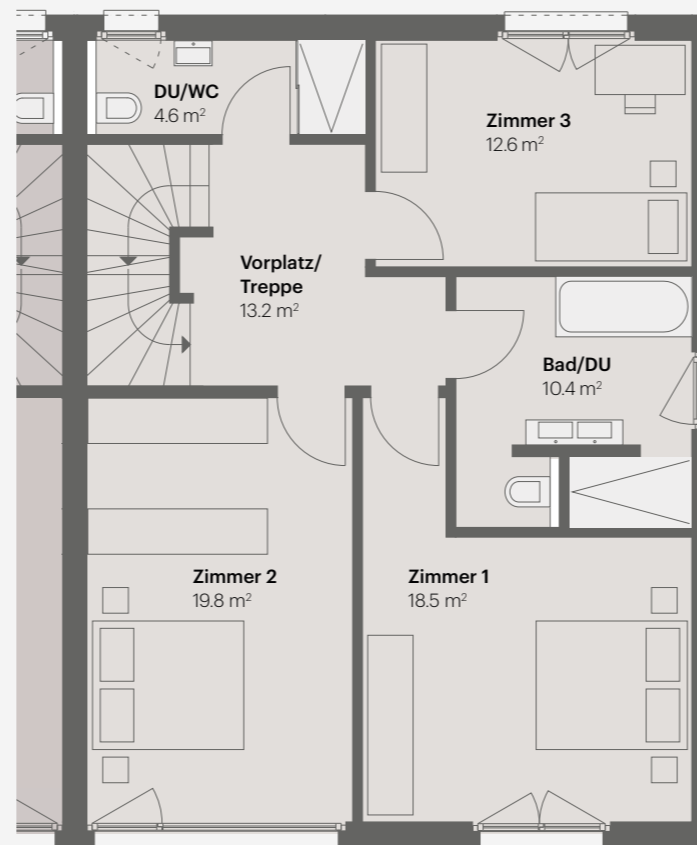
5.5 Zimmer | Wohnfläche 163.5 m² |
Untergeschoss 46.5 m² | Parzellenfläche 347 m²



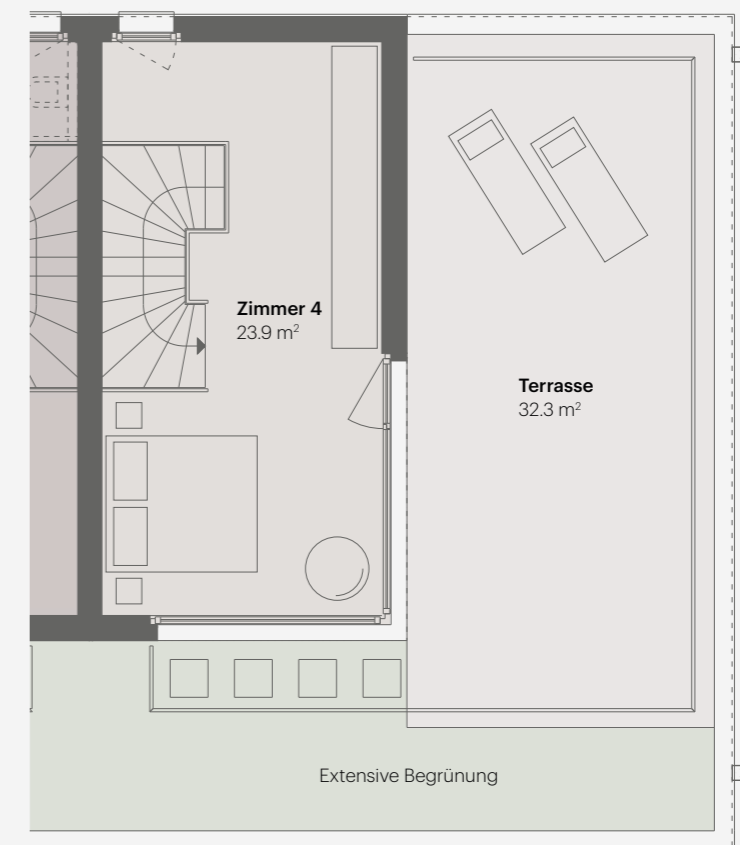
ERDGESCHOSS



OBERGESCHOSS



ATTIKAGESCHOSS



Maßstab 1:100



TIEFGARAGE HÄUSER 1-4

