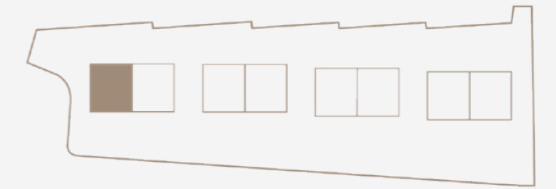
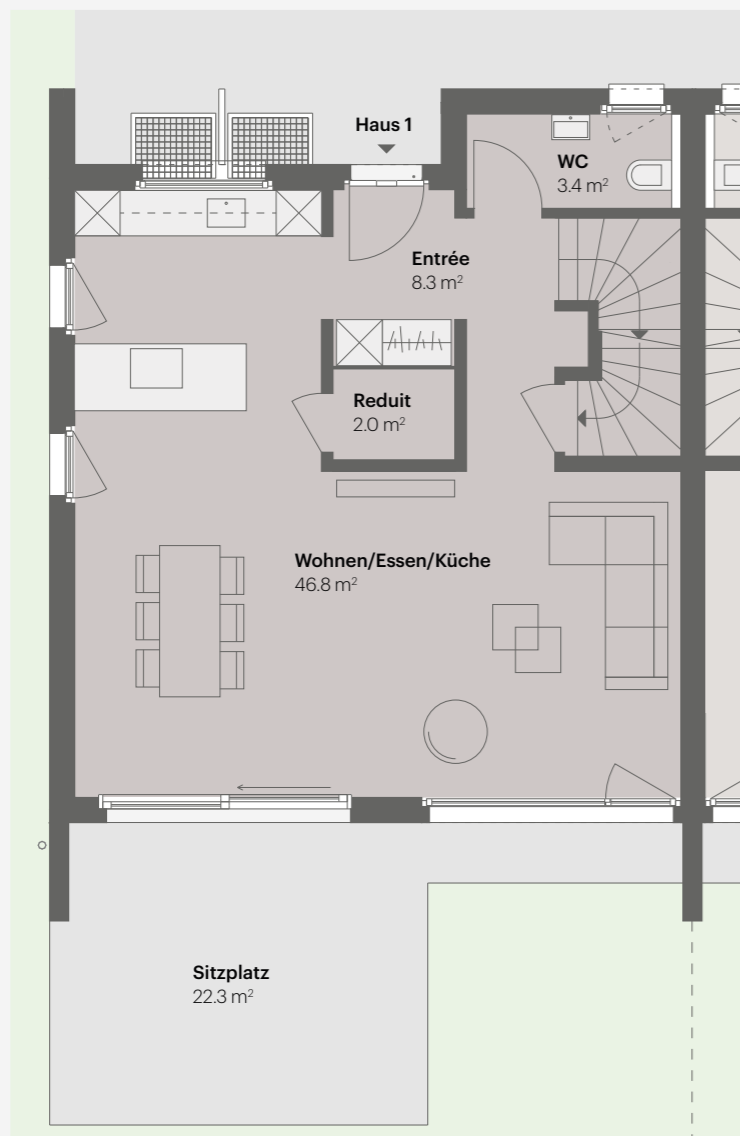


# HAUS 1

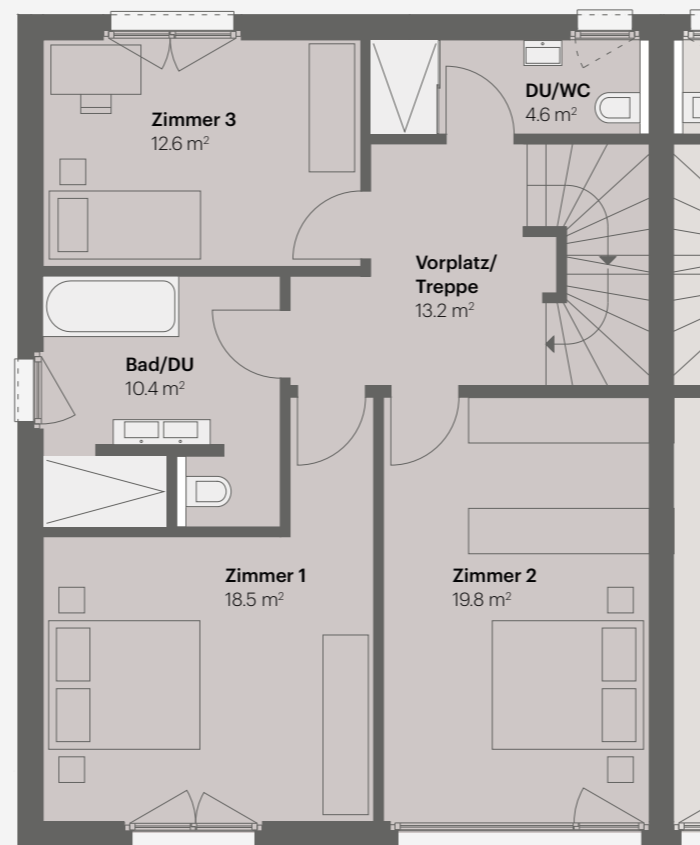


5.5 Zimmer | Wohnfläche 163.5 m<sup>2</sup>  
Untergeschoss 55.9 m<sup>2</sup> | Parzellenfläche 377 m<sup>2</sup>

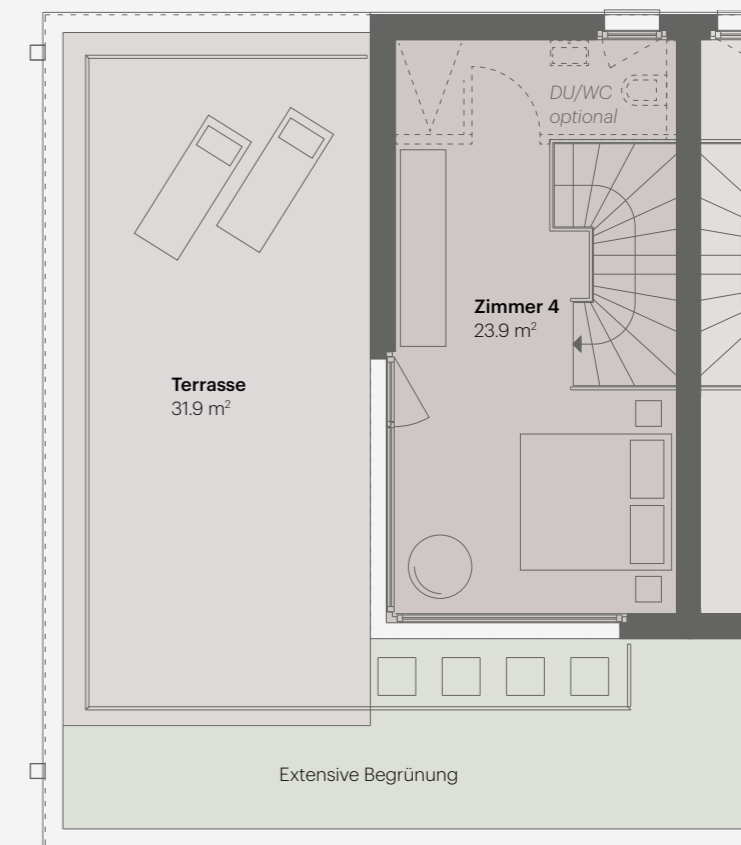
## ERDGESCHOSS



## OBERGESCHOSS



## ATTIKAGESCHOSS



Massstab 1:100



# TIEFGARAGE HÄUSER 1-4

