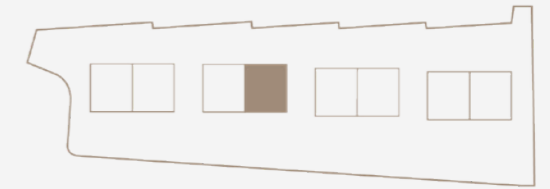


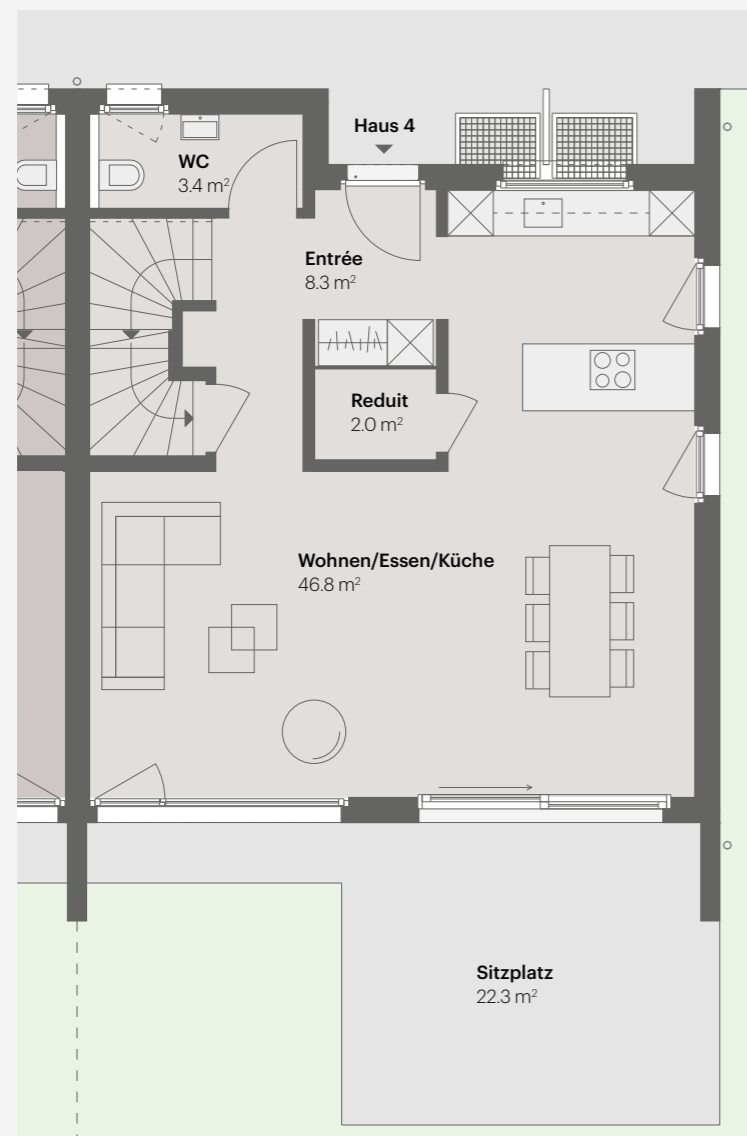
HAUS 4

5.5 Zimmer | Wohnfläche 163.5 m²
Untergeschoss 46.5 m² | Parzellenfläche 347 m²

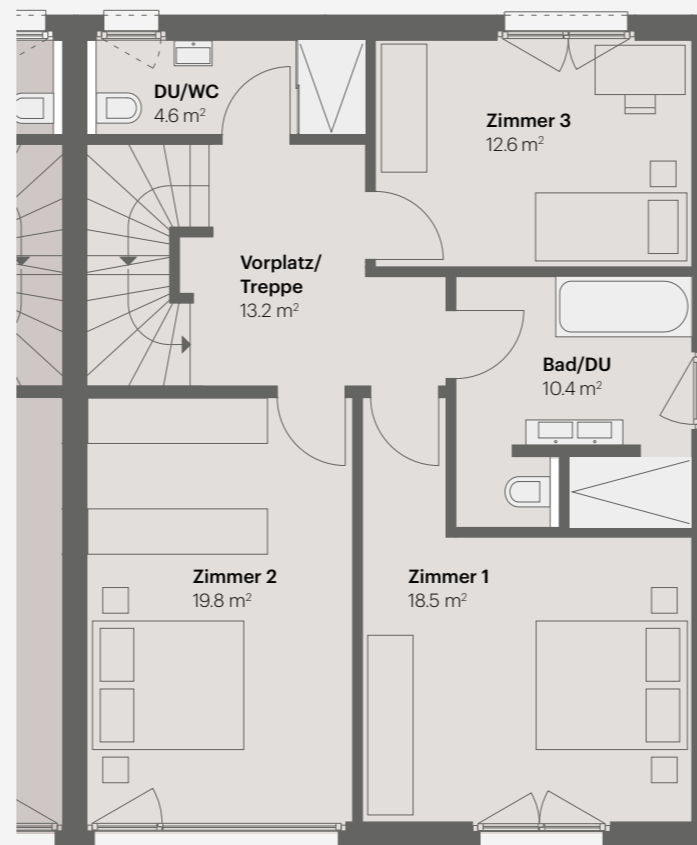
Grundriss-Option für 6.5 Zimmer Variante siehe Seite 42



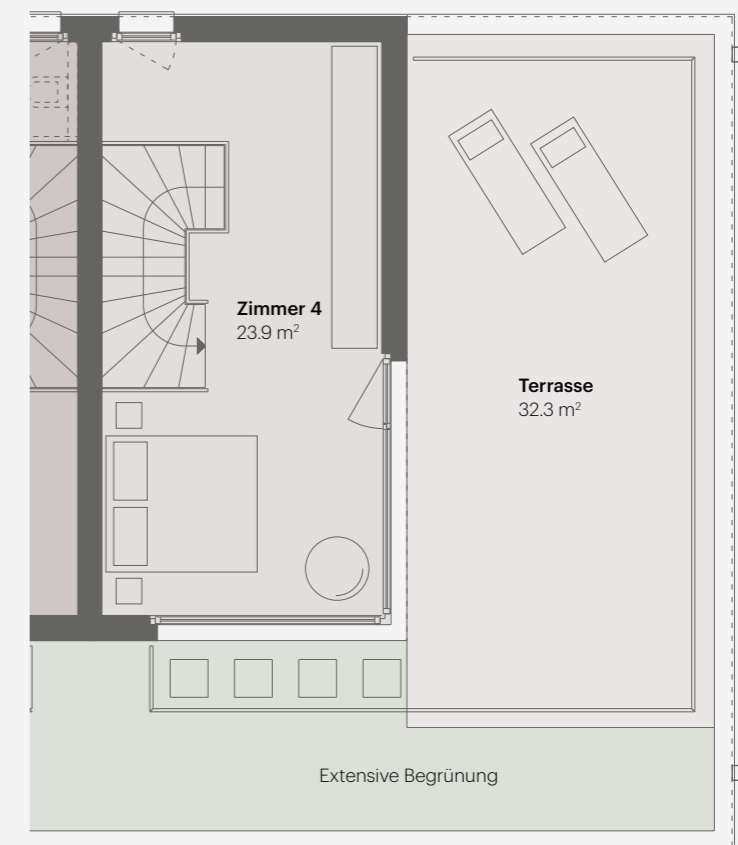
ERDGESCHOSS



OBERGESCHOSS



ATTIKAGESCHOSS



Maßstab 1:100



TIEFGARAGE HÄUSER 1-4

14

15

